



TOAD'S

PENS

Guide to Using the Reusable Injection Pen.



Welcome to the step-by-step guide on how to properly use the reusable injection pen. Please follow each instruction carefully for a smooth and safe experience. If anything is unclear, do not hesitate to seek assistance.

Preparing the Injection Pen

You NEVER want to twist your injection pen otherwise you will not have ACCESS to your glass cartridge holder, you want to pop it off with force to access it. This is what it will look like if you twist it off.



This is what it will look like when you POP it off with force.



First you want to take out your empty sterilized pen cartridge from the cartridge pouch.



You now want to pick up your luer-lock syringe with the luer-lock needle attached, pick up your BAC water and begin drawing out your desired mL of the water from the bottle.



After you have drawn your desired water amount, please wipe the vial then carefully place the luer-lock needle in the middle of the vial and angle your luer-lock needle to the side of the glass so that the BAC water doesn't land DIRECTLY onto the peptide. You do NOT want to damage your peptide with the force of the water as there will be a vacuum.



Once you have injected the desired amount of BAC water into the vial, please grab your alcohol wipe again and wipe the tip of the pen cartridge.



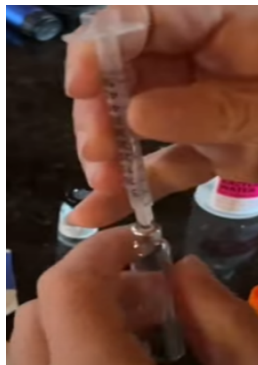
Next, you want to inject some air to release the vacuum so the force isn't too strong and begin to draw in all of your medication inside of your luer-lock syringe.



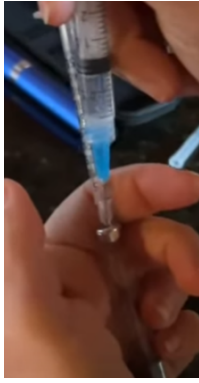
You now want to take your insulin 100u syringe, pop out the plunger and we're going to use this as our venting needle - This is what will dispel the air from the pen cartridge. (You can also use a luer-lock needle as well).



You are now going to place the venting needle onto the side of the pen cartridge rubber, do NOT place it in the middle as that's where we will inject our peptide.



Now that we have placed our venting needle, we want to insert our peptide injection syringe in the middle of the pen cartridge and begin dispensing our peptide.



Once you're done dispensing the peptide, we now have to purge the remaining air that's inside of the pen cartridge.



You now want to insert your pen cartridge inside of the glass pen cartridge holder from your selected reusable injection pen.



Now once you have inserted the pen cartridge inside of the glass cartridge holder, we will now insert the piece onto the pen itself. You will need to use force.



Now you want to screw it on.



Once you have screwed it on, it should look like this.



We are now going to take a fresh pen needle, take off the wrapping and insert it onto the top of the pen - Make sure you WIPE BEFORE inserting the fresh pen needle.



Remove the big cap cover and the thin needle cap cover



It should look like this once removed.

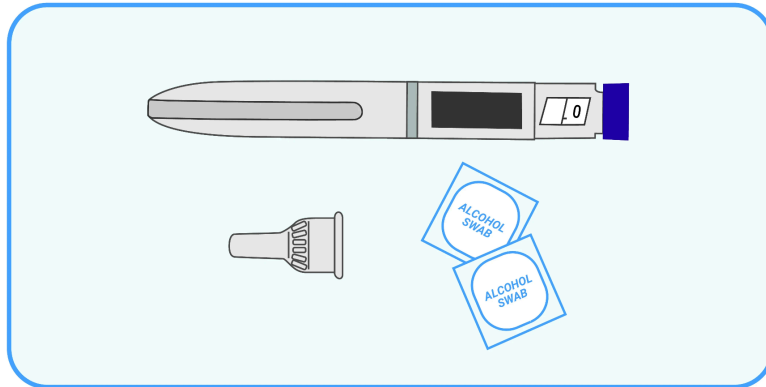


We are now going to purge the air from the pen cartridge by twisting our dial to the max units (if you have a lot of air, you dial to max units / if you have less air, do less units) Make sure to hold your pen UPRIGHT!!!

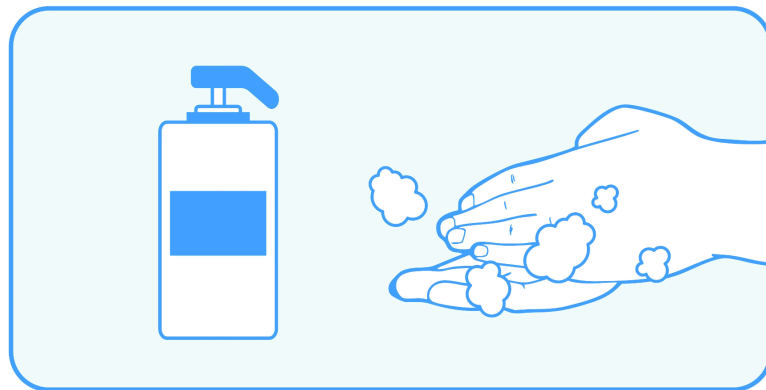


Administering the Injection

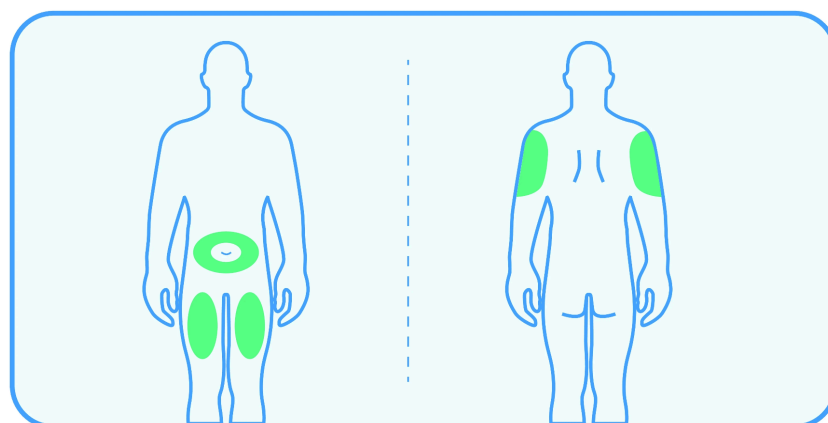
1. Gather Your Supplies



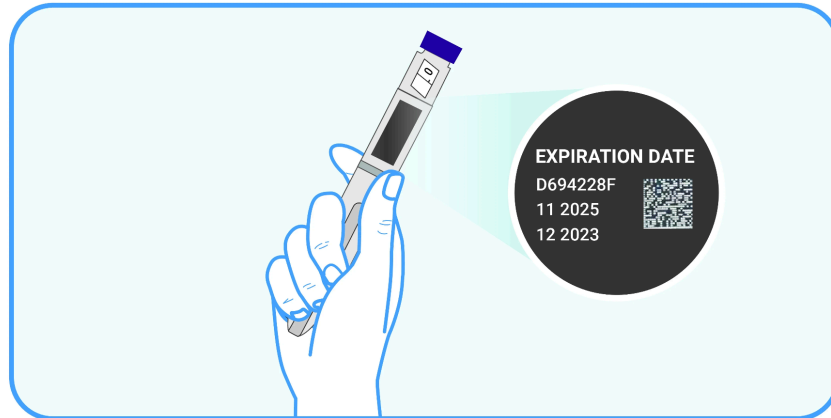
2. Wash Your Hands



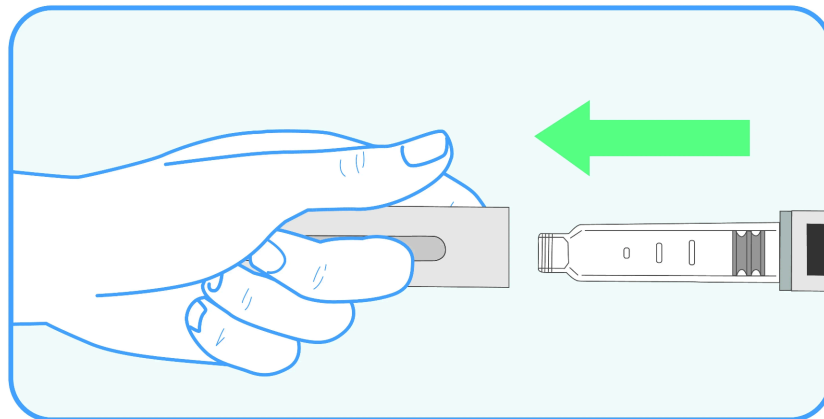
3. Choose and Clean the Injection Site



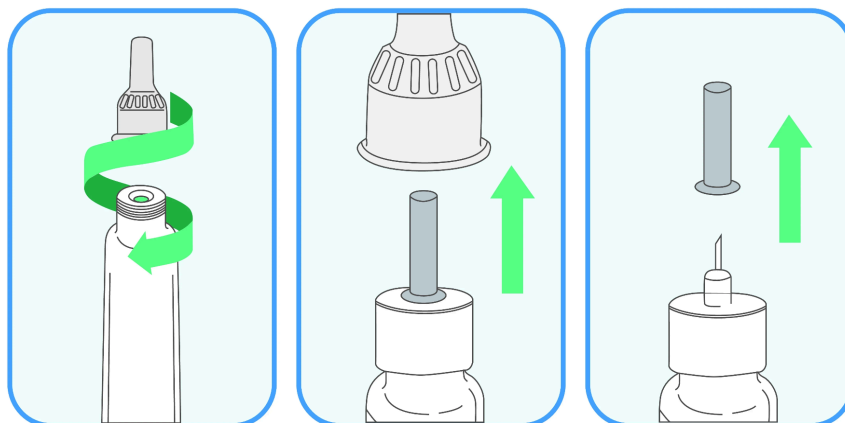
4. Inspect the Pen



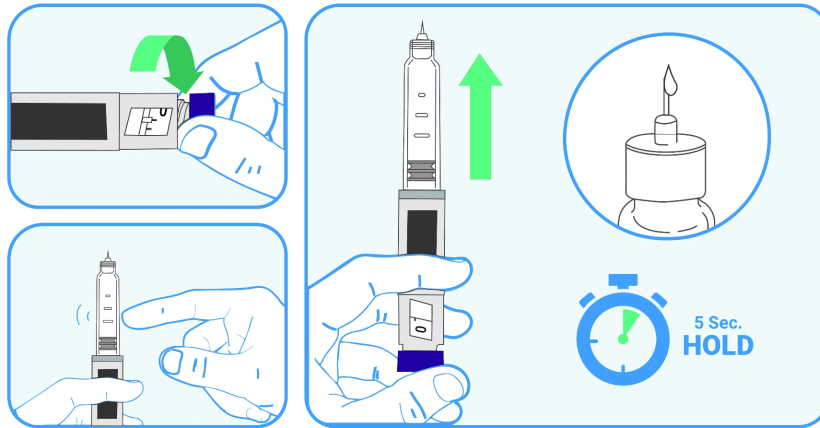
5. Remove the Pen Cap



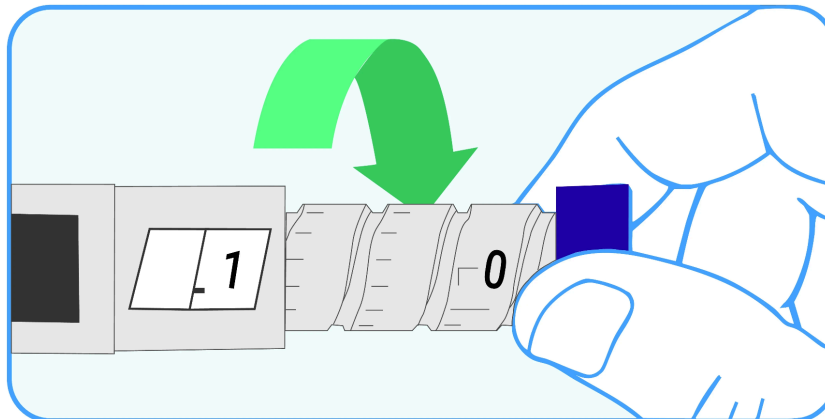
6. Insert the Needle



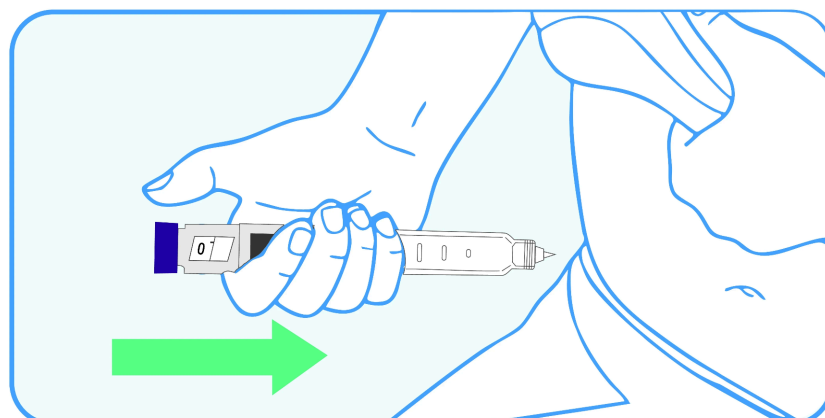
7. Prime the Pen



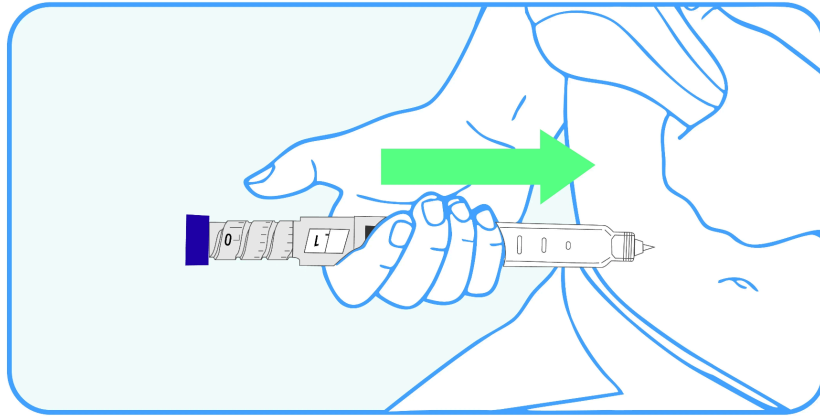
8. Select the dose (If Applicable)



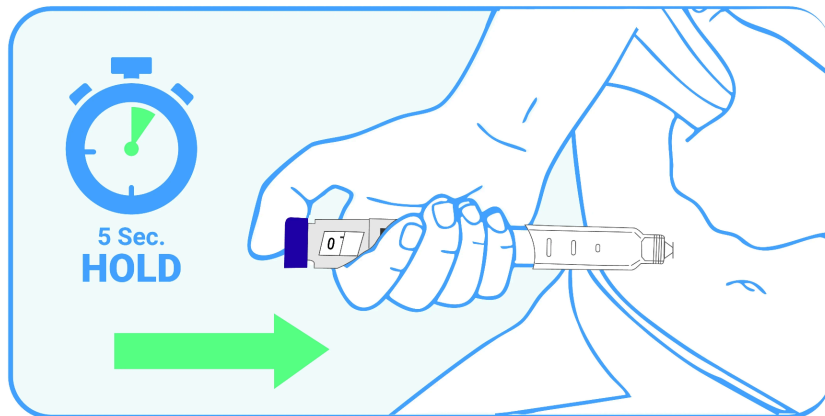
9. Position the Pen



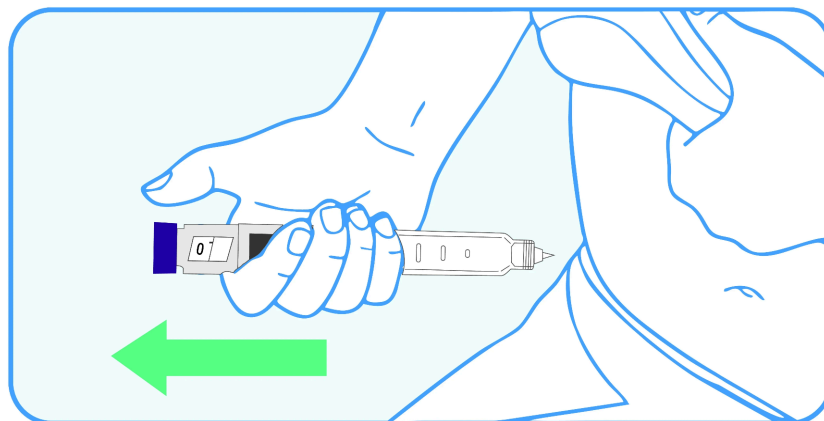
10. Administer the Injection



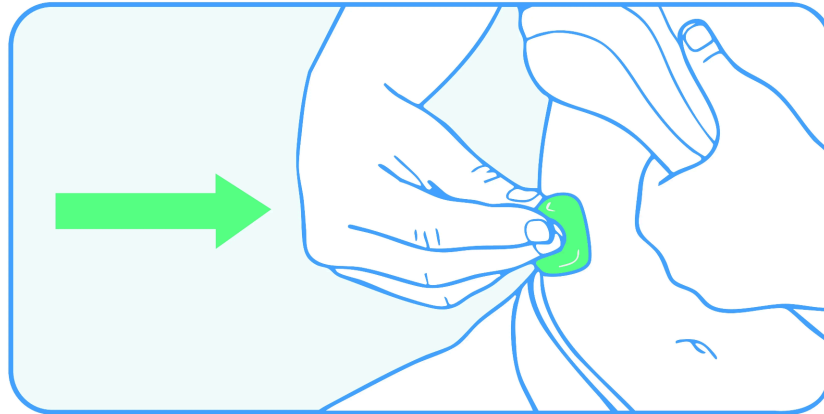
11. Wait for the Injection to Complete



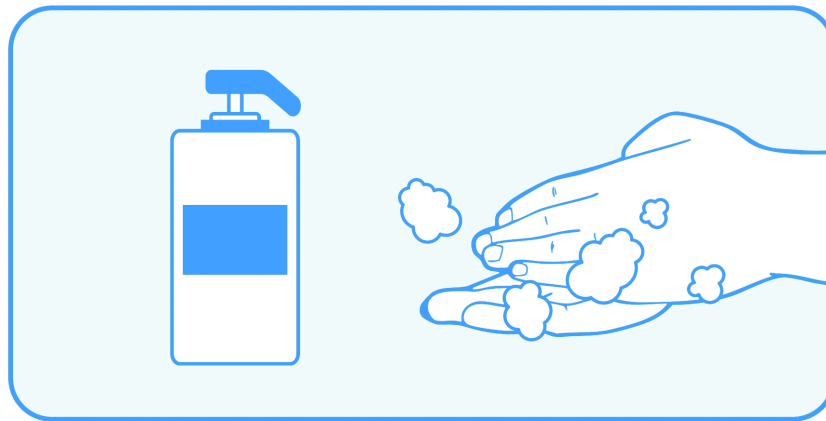
12. Remove the Pen from Skin



13. Check the Injection Site



14. Wash Your Hands Again



Finishing Up

- Remove the pen needle after injecting.
- Wipe the top of the pen cartridge.
- Replace the pen cover securely.

Vital Notice

Please follow these instructions **meticulously** to ensure proper usage and safety. If you experience any difficulties or have questions, reach out for guidance before proceeding further.

By following this guide, you can confidently and effectively use your reusable injection pen. Happy dosing!